

# IPCO "EXTRA WIDE DRIP" (TYPE D) DRIP EDGE IN STAINLESS STEEL

## 1. Product Name

IPCO "Extra Wide Drip" (Type D) Drip Edge in Stainless Steel

## 2. Manufacturer

Illinois Products Corporation (IPCO)  
423 Joseph Drive  
South Elgin, IL 60177-2268  
800-383-8183; 847-289-2800  
847-289-2804 (fax)  
www.illinoisproducts.com

## 3. Product Description

The IPCO "Extra Wide Drip" drip edge is designed to make caulking the intersection of the drip edge and roof flashing easier and more effective. The  $\frac{5}{8}$ " drip portion is large enough for the intersection but not so large as to become damaged, and thereby ineffective, before or after installation.

Other conditions that may require a wider drip function will also benefit from the IPCO "Extra Wide Drip", such as parapet walls, above or below window openings and wall intersections. The IPCO "Extra Wide Drip" is ideal for any area where aesthetics of the drip edge is not a concern.

Additionally, IPCO standard stainless steel drip edge products are available in three more width dimensions to meet virtually any need in the masonry wall. And, for dark brick or mortars, IPCO copper drip edge is the answer. For the absolute best in corner protection, the IPCO Drip Edge Preformed Inside and Outside Corners eliminate field fabrication of the drip edge corner, providing a more aesthetically pleasing and better functioning corner condition. The IPCO Drip Edge corners eliminate the sharp, protruding drip edge that is typical with field-fabricated drip edge corners. Refer to the IPCO Drip Edge and Drip Edge Preformed Corners data sheet for additional information and dimensions.

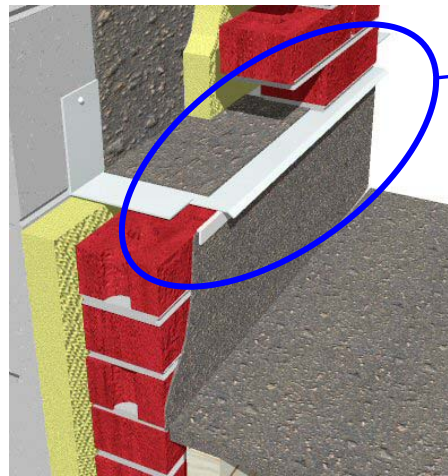
## 4. Technical Data

- Material: Type 304 grade stainless steel, 27 gauge (15mil) and complies to ASTM A-167
- Dimensions: 3" width with a  $\frac{5}{8}$ " hem; 8' in length

## 5. Installation

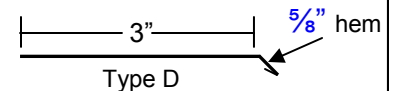
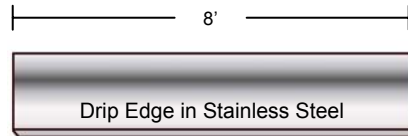
The substrate surface should be cleaned of dust, dirt and foreign matter. All sharp protrusions should be eliminated and surfaces should be dry. All data sheets and installation guides for the entire IPCO Flashing System should be read and understood by all personnel prior to installation of the IPCO Drip Edge and Drip Edge Corners.

Install IPCO Drip Edge by placing a bead of urethane sealant or adhesive along the area where the drip edge is to be used and press in place. IPCO Drip Edge can be overlapped or butted to the next piece. Use same method for placement of IPCO Drip Edge Preformed Inside and Outside Corners. Once roof flashing is in place, caulk the underside of the IPCO "Extra Wide Drip" drip edge.



Extra wide drip allows for easier intersection with roof flashing

Can be used in any condition where a wider drip is required, such as parapet walls or window openings



Do not use silicone or polysulfide sealants in contact with IPCO Flashing material or under IPCO Drip Edge or Drip Edge Corners. For additional information on the installation of the IPCO Flashing System, refer to the IPCO Flashing System data sheet as well as the data sheets for each of the components of the IPCO Flashing System.

## 6. Availability and Cost

All Illinois Products Corporation masonry products and cost information are available through a nationwide network of masonry and building supply distributors.

## 7. Warranty

The recommendations and properties attributed to the products are based upon what is believed to be reliable information. Illinois Products Corporation warrants materials to be of good quality and will replace unused material proven to be defective. No expressed or implied warranty of installed material is made because satisfactory results depend not only on product quality but also upon factors that are beyond IPCO's control

## 8. Maintenance

No maintenance is required after proper installation.

## 9. Technical Services

Contact the manufacturer for any required technical services. Details and suggested application drawings are available on each individual product data sheet. IPCO Material Safety Data Sheets should be read and understood by all personnel before using the products.

## 10. Filing Systems

Product information is available from the manufacturer in the following formats:

- Complete IPCO product line catalog in printed and CD formats
- Online access to all data sheets at: [www.illinoisproducts.com](http://www.illinoisproducts.com)

Revised 01/2007



ILLINOIS PRODUCTS CORPORATION  
423 Joseph Drive South Elgin, IL 60177

[www.illinoisproducts.com](http://www.illinoisproducts.com)  
800-383-8183 847-289-2804 fax