

# IPCO ADJUSTABLE WEEP VENT\* HORIZONTAL - FOR BED JOINTS

## 1. Product Name

IPCO Adjustable Weep Vent for Bed Joints

## 2. Manufacturer

Illinois Products Corporation (IPCO)  
423 Joseph Drive  
South Elgin, IL 60177  
800-383-8183; 847-289-2800  
847-289-2804 (fax)  
www.illinoisproducts.com

## 3. Product Description

The IPCO Adjustable Weep Vent is the only weep vent that adjusts in length to accommodate cavities of various widths, filling the entire cavity.

With other vents that do not extend into the cavity, the water exit path can be easily blocked by mortar droppings.

The inner slider of the IPCO Adjustable Weep Vent extends into the cavity up to the backup wall or mortar capture / collection device

As a result, the open bottoms of the IPCO Adjustable Weep Vent create a channel for water to exit the wall under any mortar droppings.

A screen at the outside face blocks insects and debris, while allowing air to circulate.

The IPCO Adjustable Weep Vent has less area exposed to the eye than conventional weeps.

Since the IPCO Adjustable Weep Vent is non-compressible, it will not be crushed or compressed during construction.

The IPCO vent works with the mortar collection system and the flashing system to facilitate the exit of water from the cavity wall. Whether using a mortar capture system or a mortar deflection system, the IPCO Adjustable Weep Vent will be an asset to the wall's drainage capabilities.

The IPCO Weep Vent can also be used at the top of the wall structure as a vent.

Use in conjunction with the entire IPCO Flashing System, including self-adhesive rubberized asphalt flashing, preformed corners and end dams, drip edge, preformed drip edge corners, cavity bridge and PVC termination bar for total cavity wall protection.

## 4. Technical Data

Dimensions:

- Weep Vent Base: 3 5/8" (L) x 3/8" (H) x 1" (W)
- Weep Vent Extension: 3 5/8"

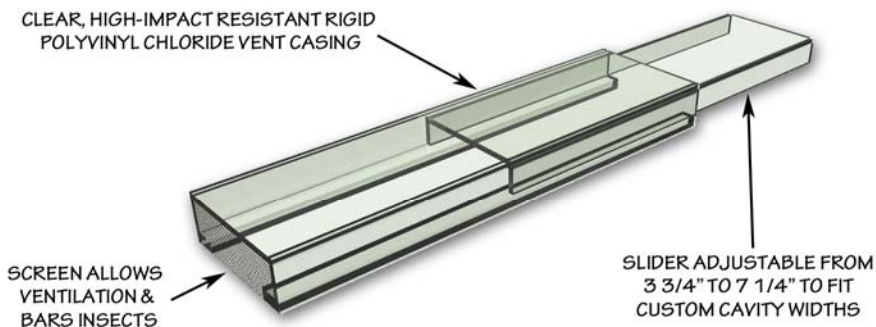
Material: Clear, rigid high impact resistant polyvinyl chloride with good low-temperature performance without migrating plasticizers.

## 5. Installation

Extend the slider so that when the weep vent is in place, it will meet the following criteria:

- Clear cavity: extend to backup wall
- Cavity wall with rigid insulation board: Extend to face of rigid insulation
- Cavity wall with mortar capture device: Extend to face of mortar capture device or under it

CLEAR, HIGH-IMPACT RESISTANT RIGID POLYVINYL CHLORIDE VENT CASING



SCREEN ALLOWS VENTILATION & BARS INSECTS

SLIDER ADJUSTABLE FROM 3 3/4" TO 7 1/4" TO FIT CUSTOM CAVITY WIDTHS

## ADJUSTABLE HORIZONTAL WEEP FOR BED JOINTS

### D. Cavity with mortar deflection device:

Extend to face of drainage mat

The horizontal weep has a pressure sensitive adhesive on the bottom. Remove release paper and affix the vent to the flashing at 24" on center or specified spacing.

When installing the IPCO Adjustable Weep Vent at the top of a wall as a vent, be sure to maintain a clear opening for the vent at both faces.

## 6. Availability and Cost

All Illinois Products Corporation products and prices are available through a nationwide network of masonry and building supply distributors.

## 7. Warranty

The recommendations and properties attributed to the products are based upon what is believed to be reliable information. Illinois Products Corporation warrants materials to be of good quality and will replace unused material proven to be defective. No expressed or implied warranty of installed material is made because satisfactory results depend not only on product quality but also upon factors that are beyond IPCO's control.

## 8. Maintenance

No maintenance is required after proper installation.

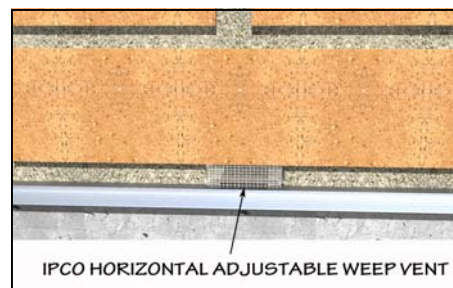
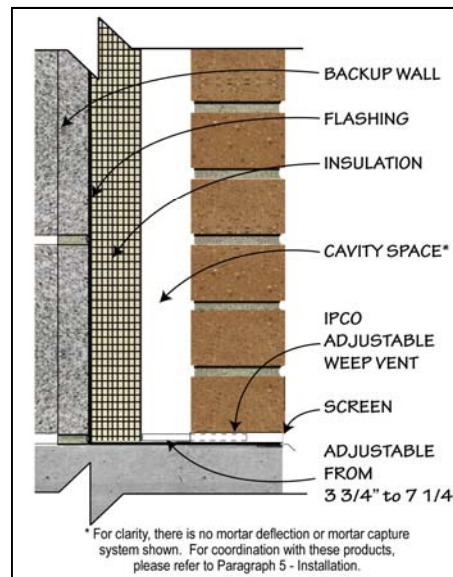
## 9. Technical Services

Contact the manufacturer for any required technical services. IPCO Material Safety Data Sheets should be read and understood by all personnel before using the products.

## 10. Filing Systems

Product information is available from the manufacturer in the following formats:

- Complete IPCO product line catalog in printed and CD formats
- Online access to all data sheets at: [www.illinoisproducts.com](http://www.illinoisproducts.com)



\* Patent No. 7,877,946



ILLINOIS PRODUCTS CORPORATION  
423 Joseph Drive  
South Elgin, IL 60177

www.illinoisproducts.com  
Phone: 800-383-8183  
Fax: 847-289-2904